

muratec

MFX-2725 MFX-2225

**Office
Bridge**




MANAGEMENT


FAX


COPY


E-MAIL


PRINT


SCAN



THE COMPLETE SOLUTION

Muratec's MFX-2225 and MFX-2725 multifunctionals offer the versatility of an all in one system with the flexibility of A3 output. No other multifunctionals in this class offer the same level of performance as the MFX-2225 and MFX-2725.

Both have copy, print, scan and fax capability as standard. Print and copy speeds are 22 pages per minute for the MFX-2225 and 27ppm for the MFX-2725. For maximum output productivity the MFX-2225 and MFX-2725 feature Muratec's QuadAccess technology, allowing simultaneous copy, print, scan and fax jobs.

To ensure users get the full benefits of the MFX-2225 and MFX-2725 multi-function operation, the systems feature Voice Guidance for ease of use. Voice Guidance provides audible user prompts for multi step operations such as entering speed dials and clearing paper misfeeds. The MFX-2225 and MFX-2725 also have a large display panel allowing touch screen operation of some functions for easy operation and maximum productivity.



- ***Touch Display (Partial)***
- ***Voice Guidance***
- ***Easy to use***
- ***Print, copy, scan and fax***
- ***Duplex unit***
- ***50 sheet RADF***
- ***500 sheet paper cassette (MFX-2225)***
- ***2 x 500 sheet paper cassette (MFX-2725)***
- ***100 sheet bypass tray***



UI Project

MURATEC's Usability Improvement (UI) Project makes it easy for users to operate our products.

THE OUT OF THE BOX SOLUTION FOR EVERY OFFICE

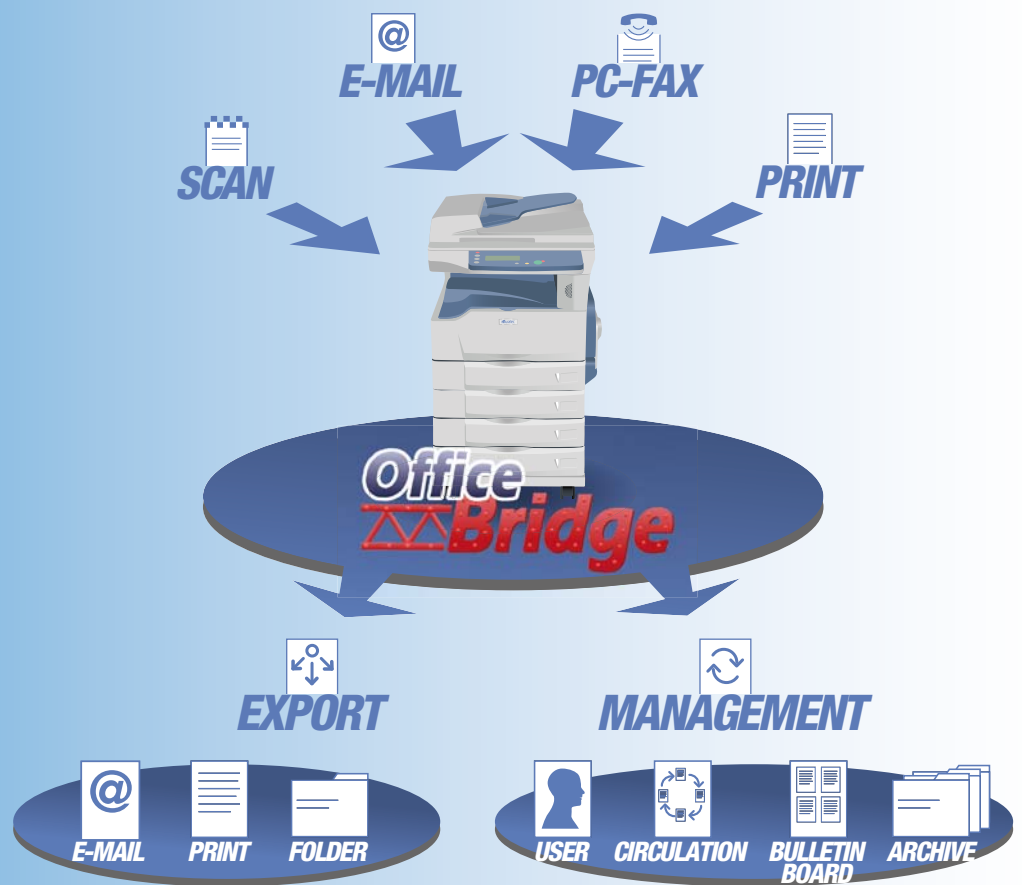
As standalone devices the MFX-2225 and MFX-2725 offer a complete solution for all document imaging needs. When upgraded with Muratec's OfficeBridge document management solution the MFX-2225 and MFX-2725 to operate as a powerful network solution for sharing documents between a workgroup of up to 100 users. OfficeBridge provides network print, network scan, scan to e-mail, Internet fax, desktop fax and workflow management functionality all in one simple to use application. In addition, an optional PCL6/5e card upgrade is available supporting high speed A4 & A3 PCL6/5e printing.

The MFX-2225 and MFX-2725 are packed with high productivity features such as auto-duplex (double-sided) printing and copying to speed document output saving time and resources.



OFFICEBRIDGE – SAT-NAV FOR YOUR OFFICE!

- Network printer
- Scan to E-Mail
- Scan to Folder
- Scan to User
- PC-Fax
- Internet-Fax
- Fax Forwarding
- DHCP compliance
- LDAP compliance
- Browser based configuration
- Workflow Management
- Bulletin Board

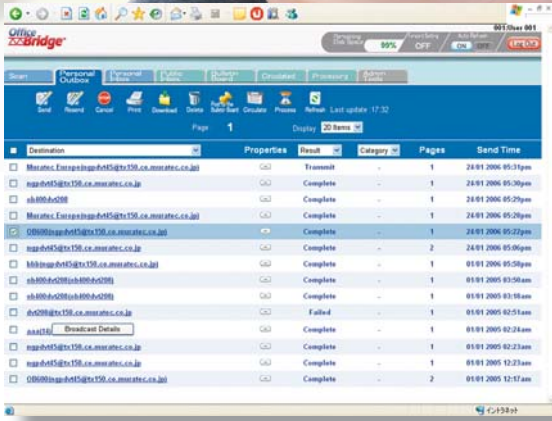


OfficeBridge is an optional upgrade for multi-functional devices in the Muratec range, including the MFX-2225 and MFX-2725.

Because OfficeBridge uses a web browser interface, it is completely independent of computer operating systems and network protocols, making it easy and economical to install. The use of a familiar web browser interface also makes OfficeBridge intuitive and simple to under-

stand so users can get the benefits of OfficeBridge straight away with the minimum of training.

OfficeBridge is supplied for a single one-time cost, with no user licence costs or renewal charges, unlike some network fax and printing options, making OfficeBridge a very cost-effective solution for document network sharing and printing.



NAVIGATION MADE SIMPLE

MODE SWITCH

Easy selection for copy, fax or scan.

TOUCH DISPLAY

The lower area of the display is touch-sensitive. Functions can be allocated individually for every single mode. With the arrow buttons navigation is very simple.

VOICE GUIDANCE

The Voice guidance supports the user with explanations of the functions and solving the problems.

MACRO KEYS

There are three macro or job memory buttons. With this for example you can scan to folder with one single touch.

ONE TOUCH KEYS

There are 40 one touch keys for your most popular destinations.



THE BEST SOLUTION FOR YOUR IMAGING NEEDS!

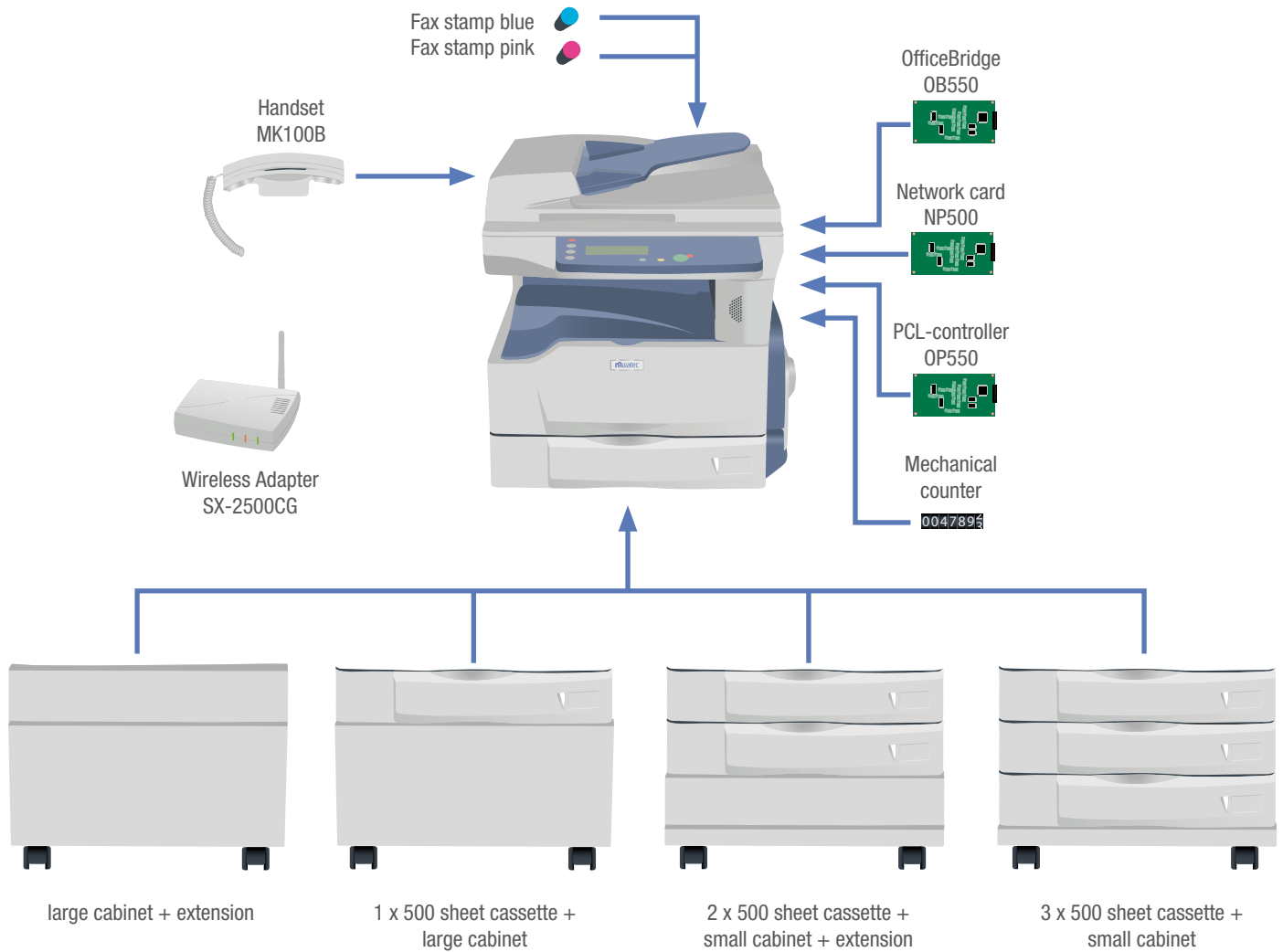
With the MFX-2225 and MFX-2725 Muratec offer you a compact multi-functional with A3 output and a host of high productivity features. As usual Muratec's low Total Cost of Ownership policy means that the MFX-2225 and MFX-2725 will be attractive for applications where continuous commercial usage requires a rugged and cost-effective print solution.

To ensure you get the full benefits of the MFX-2225 and MFX-2725 multi-function operation Voice Guidance guarantees ease of use. The option of OfficeBridge, Muratec's low cost document management solution means that the MFX-2225 and MFX-2725 are equally effective for workgroups or for personal use.

With their comprehensive feature set, A3 output, low running costs and ease of use the MFX-2725 and the MFX-2225 are the perfect partners for you office.



OPTIONS / CONFIGURATION



The MFX-2725 has 2 x 500 sheet cassettes as standard



GENERAL FEATURES

Printing Copying speed	22/27 ppm
Printing method	LED
Grey scales	256
Paper feeder	2725 Standard: 2 x 500 sheet cassette (A5-A3, 60-90 g/m ²), 2225 Standard: 1 x 500 sheet cassette (A5-A3, 60-90 g/m ²), 100 sheet Bypass (A6-A3, 60-120 g/m ²) Max.: 4 x 500 sheet cassette
Warm up time	15 seconds
Display	LCD Partial Touch Display
Simultaneous function Interface	Quad Access Standard: USB Option: Ethernet 10/100 BaseT TCP/IP
Network protocol	TCP/IP
Operating systems	Windows 98(ethernet only), 98SE, ME, NT4.0(ethernet only), 2000, XP, Server2003 (network print only)*1, Vista MFX-2225: 600.3 x 686.97 x 634.8 mm (WxHxD with 1 cassette) MFX-2725: 600.3 x 686.97 x 758.8 mm (WxHxD with 2 cassette)
Dimensions	
Weight	57.8 Kg (incl. 1 cassette, RADF and duplex, excl. toner)
Power	220-240 VAC, 50/60Hz

COPY

RADF	50 sheets (A5-A3, 52-105 g/m ²)
Copy quantity	1-999
FCOT (First copy output time)	5.6 seconds*2
Zoom ratio	25-400% (FBS, 1% steps)
Resolution	600 x 600 dpi
Copy functions	Electronical Sorting, Rotate Copy, Copy Reservation, Duplex Copy, Booklet Copy, Combine Copy, Margin Shift, Card Copy, Remove Background



MURATEC EUROPE GmbH

Hanns-Martin-Schleyer-Str. 3
47877 Willich, GERMANY

www.muratec-europe.de

MURATEC EUROPE (UK)

343 Edinburgh Avenue, Slough
Berkshire, SL1 4TU, UK

www.muratec-europe.co.uk

PRINT

Controller	Standard: GDI Option: PCL6/5e
Resolution	600 x 600 dpi
Print functions	Duplex Print, Booklet Print, Image Combining, Electronic Sorting, Job cancel

SCAN

Type of scanning	Standard: TWAIN Option: Ethernet
Resolution	600 / 300 / 200 dpi
Scan speed	0.8 seconds/page (A4 LEF, 300 dpi)
Scan format	PDF, TIFF
Scan functions	Option: Scan to Folder, Scan to E-Mail, E-Mail Broadcast, Folder Broadcast

FAX

Modem speed	33.6 Kbps
Data compression	MH, MR, MMR, JBIG
Transmission speed	2 seconds
Memory	64 MB (4,665 A4 pages)*3
Memory backup	72 hours
Address book	200 addresses (max: 2,000)
Broadcasting	230 addresses (Direct dial: 30)
Group dialing	32 groups (max: 200)
Fax history	100
Fax functions	Block Junk Fax, Fax Forwarding, Dial Double-Push Function, Security Reception, Rotate Transmission/Reception, Confirmation Report, LDAP (OB)

OPTIONS

PCL-controller, network card, OfficeBridge, 500 sheet cassette, mechanical counter, fax stamp, handset, wireless adapter, cabinet

Model	2725/2225	27250B/22250B	2700/2200	27000B/22000B
RADF / ADF	RADF	RADF	ADF	ADF
Duplex	Standard	Standard	Standard	Standard
A3 33.6K Fax	Standard	Standard	Standard	Standard
Paper capacity Std.	1100 / 600	1100 / 600	1100 / 600	1100 / 600
Network Print	Option	Standard	Option	Standard
GDI Print	Standard	Standard	Standard	Standard
PCL6/5e Print	Option	Option	Option	Option
TWAIN scanning	Standard	Standard	Standard	Standard
Scan to Folder	Option	Standard	Option	Standard
Scan to E-mail	Option	Standard	Option	Standard
LDAP compliance	Option	Standard	Option	Standard
Network PC-Fax	Option	Standard	Option	Standard

All data relating to the paper capacities of the document feeder, the bypass tray and the paper cassettes apply to paper weighing 80 g/m² unless expressly stated otherwise.

All data relating to the speed of printing, copying, scanning or faxing apply to paper of an A4 format unless expressly stated otherwise.

Muratec reserve the right to change design, features and specification details without prior notice.

Some brand or product are registered trademarks or product titles of their respective manufacturers. Muratec does not accept any liability or guarantee for these products.

Windows 98SE, NT, 2000, ME, XP, 2003 and Vista are registered trademarks of the Microsoft Corporation. E&OE

*1 Utilities (InfoMonitor etc) are not supported.

*2 From FBS from 1st cassette

*3 Based on ITU-T Test Document 1 stored at normal resolution.